

Table 1-1. 9132A Memory Interface Pod Specifications

**EMULATION SPECIFICATIONS**

Boot ROM Space Size (See Appendix A) ..... 2K bytes min.

**DC ELECTRICAL SPECIFICATIONS****Protection**

Maximum External Voltage  
on a Single UUT Access Pin ..... -7 to +12 volts

ESD Protection  
on UUT Access Pin ..... 15 kV through 100 pF and 500 ohms  
without damage to the Pod

Improper Connection to UUT ..... No damage to the Pod or UUT

UUT Power Detection ..... UUT power sensed as present  
for  $V_{CC} > 3.5V$  (typ.)

UUT Protection against Latchup ..... Pod outputs disabled when UUT  
 $V_{CC} < 3.5V$  (typ.)

Float Voltage Limit ..... 30V maximum above earth ground

Mechanical interlocks ..... Pod power is interrupted by opening rear panel

**Pod Input Specifications**

Input Low Voltage ..... 0.8 V max.

Input High Voltage ..... 2.0 V min.

Input Leakage Current .....  $\pm 50 \mu A$ ,  $+0.45 \leq V_{OUT} \leq V_{CC}$

**ROM Module Output Specifications**

## ROM Module Outputs:

Output Low Voltage ..... 0.2V (max.) at  $I_{OL} = 50 \mu A$   
0.8V (typ.) at  $I_{OL} = 10 \text{ mA}$

Output High Voltage ..... 3.5V (typ.) at  $I_{OH} = -3 \text{ mA}$

Output Tri-state Leakage .....  $\pm 50 \mu A$ ,  $+0.45 \leq V_{OUT} \leq V_{CC}$

**Sync Module Output Specifications**

## Overdrive Outputs (for UUT Reset and HOLD):

Output Low Voltage ..... 0.6V (max.) at  $I_{OL} = 80 \text{ mA}$  pulsed

Output High Voltage ..... 3.5V (min.) at  $I_{OH} = -80 \text{ mA}$  pulsed

Protection ..... Status monitoring provides overdrive lockout

**AC ELECTRICAL SPECIFICATIONS**

(See Figure 1-3)

**ROM Module**

## Access Time:

Address to Data ..... 100 ns max. (tACC)

Slower of CE or OE to Data ..... 50 ns max. (tCE)

Data Hold Time (Address to Data) ..... 20 ns min. (tOH)

Data Float Time (CE or OE to Data Float) ..... 40 ns max. (tDF)

**Sync Module**

## Clock Input :

Frequency ..... 0 to 50 MHz

Pulse Width ..... 10 ns min. (high or low)

Table 1-1. 9132A Memory Interface Pod Specifications (cont)

**AC ELECTRICAL SPECIFICATIONS (cont)****Other Inputs**

Pulse Widths .....20 ns min. (high or low)  
 Transition Time.....50 ns max. (10% to 90%)

**ENVIRONMENTAL**

Operating Temperature .....+5 to 50° C, 8 to 70% RH (noncondensing)  
 Storage Temperature ..... -40 to 70° C, 8 to 80% RH (noncondensing)  
 Temperature Gradient..... ±10° C per hour

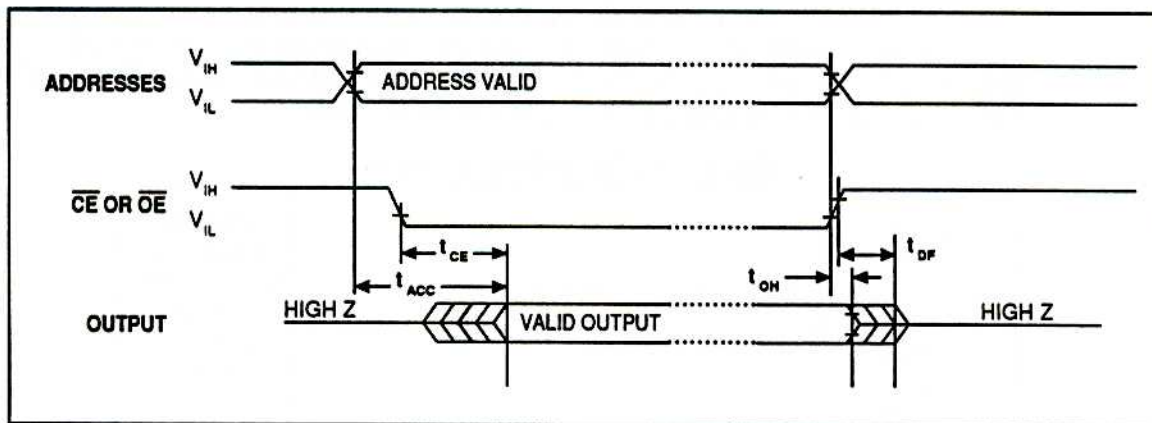


Figure 1-3. AC Waveforms