



The HP 16505A prototype analyzer gives every member of the design team a new level of visualization and analysis capability for powerful, multi-discipline problem-solving. This powerful troubleshooting tool offers:

Speedy discovery of difficult-to-diagnose functional problems through the use of multiple window displays and drag-and-drop, time-correlated global markers.

Simultaneous data presentations covering widely different aspects of a problem, including large waveform displays that let hardware engineers see timing and analog activity, and real-time traces that present activity in familiar formats for software developers.

Unmatched troubleshooting flexibility that lets you adapt your analysis approach to the problem as the investigation develops, testing new ideas as facts are revealed.

The ability to almost instantaneously shift the focus of your investigations. Moving from a chart or histogram overview of bus activity to detailed timing or analog waveforms takes just seconds, for example.

A built-in pattern filter, so you see only the data you need to view.

Data and configuration storage, so you can review or reinstate the debugging process whenever you want. Measurement files can also be transferred to co-workers.

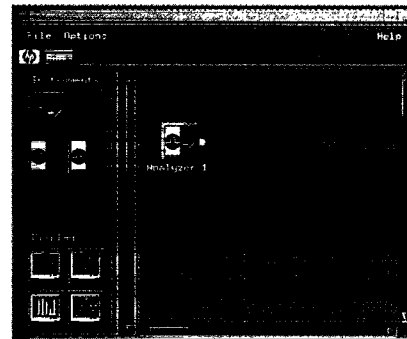
The power of X-Windows, which brings remote control capability to your windowed, networked environment, and allows the entire measurement system to be operated from various sites.

Compatibility with your HP 16500B system and its popular measurement modules. Upgrades are available for HP 16500A mainframes.

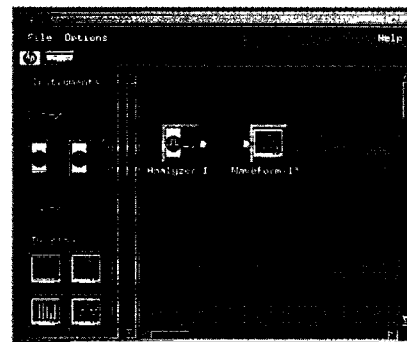
Increasingly complex digital systems multiply elusive problems. Maintaining development schedules requires powerful system integration and debugging tools. Only the HP 16505A prototype analyzer, working with an HP 16500B, provides such tools.

Your entire design team will find the prototype analyzer's analysis and visualization capabilities to be flexible, fast, and effective, yet also easy to use.

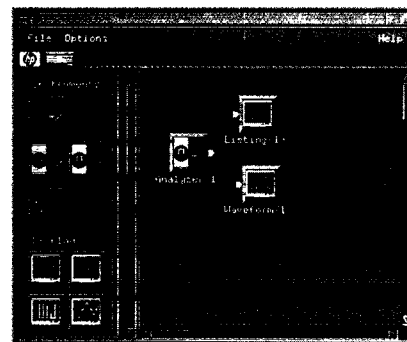
For more information on the HP 16505A prototype analyzer, please turn the page. ►



The HP 16505A uses icons to represent instrument, analysis, or display capability.



Construct your own measurements by simply connecting any analysis or display tool to any instrument tool.



You can explore new time-correlated views of the same data by connecting multiple display tools to the same instrument tool.