



Product Dimensions: Weight: 2.5 kg
Width×Height×Depth=232mm×107mm×91mm

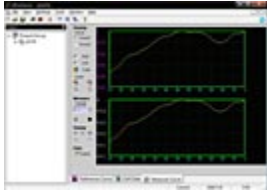
Application

1. Manufacturing Test
2. Quality Test
3. Laboratory
4. Scientific research and Education
5. Maintenance

Advanced Features

1. True 5½ digits resolution (240,000-count)
2. 120 rdgs/s maximum sample rate
3. Up to 0.015% accuracy of DC Voltage per year
4. Command compatibility : Replace mainstream DMM randomly via the compatibility of their command
5. Patented Any Sensor test capability
6. 256×64 pixels LCD display, to support multi-display and screen menu
7. Interfaces: GPIB, LAN (LXI-C Class) , RS-232, USB Host and USB Device

Advanced Performance



Ultrasensor Software

Standard Accessories



Power Cord



Test Lead Kit

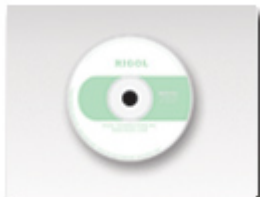


Backup Fuse



USB Cable

Optional Accessories



CD-ROM



Quick Guide



Warranty Card

Performance Characteristics

Specifications:			
Measurement Function	Range	Frequency Range/ Testing Current	Accuracy:1 year \pm (% of reading + % of range)
DC Voltage	200mV ~ 1000V		0.015 + 0.003
DC Current	200uA ~ 10A		0.020 + 0.005
AC Voltage(RMS)	200mV ~ 750V	20Hz ~ 100kHz	0.20 + 0.05
AC Current(RMS)	20mA ~ 10A	20Hz ~ 10kHz	0.30 + 0.06
Resistance (2-wire and 4-wire)	200 Ω ~ 100M Ω		0.020 + 0.003
Capacitance	2nF ~ 10000uF		1.0 + 0.5
Diode test	2.4V	1mA	0.05 + 0.01
Frequency and Period	200mV ~ 750V	10Hz ~ 1MHz	0.01 + 0.003
	20mA ~ 10A	10Hz ~ 100kHz	0.01 + 0.003
Continuity	2K Ω	1mA	0.05 + 0.01
note : All the indicators are the typical value under standard test situation			
Other parameters			
Measurement Function	DC Voltage、DC Current、AC Voltage(RMS)、AC Current(RMS)、Resistance(2-wire and 4-wire)、Capacitance、Diodes test、Frequency and Period、Continuity、short current、any sensor		
Math	"Pass/Fail" Limit Test、Standard Deviation、Histogram、Relatively、Null、Max/Min/Avg、dBm、dB		
Other Functions	Built-in 10 groups of configuration storage,10 groups of configuration storage of any sensor, 2048 historical reading data record and check, 10 groups of historical datum storage, Exterior trigger input and VMC output, Reading hold, Single trigger		
Display Characteristic	Multi-display, menu, multi-language help and waveform display		
Security	CAT II 600V, CAT I 1000V. Contaminated Class 2		
Shock and Vibration	MIL-T-28800, type III, class 5 (sine)		
Power Supply	110/220V \pm 20%, 45 ~ 65Hz, 20W Max		